

J. Paul Leonard Library

ORGANIZATION CHART

Deborah C. Masters
University Librarian

*Academic Senate Library
Advisory Committee*

Barbara Loomis, President
Friends of the JPL Library

Christy Stevens
Associate University Librarian
MPP III

Christopher Novak
Head of Information Technology
ITC Expert

Kendra Van Cleave
Acting Department Chair (.50)
Associate Librarian (.50)

Paul Jackson
Graphic Designer

Library Administration

Elizabeth Detrich
Personnel Coordinator
AA/S

Vacant
Personnel & Payroll Assistant
ASC I

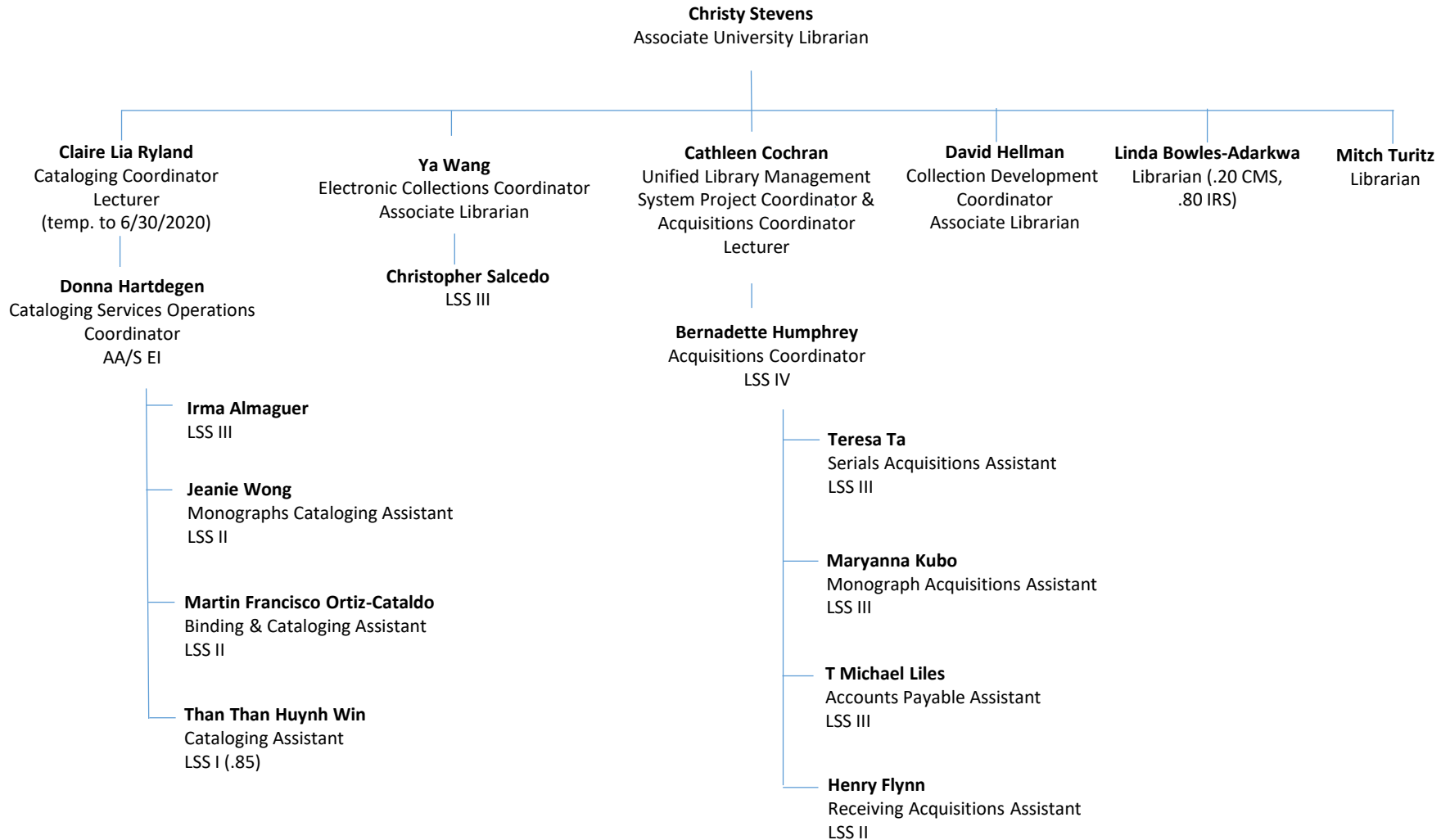
Matthew Blevin
Building Coordinator
AA/S EI

Vacant
Storekeeper I

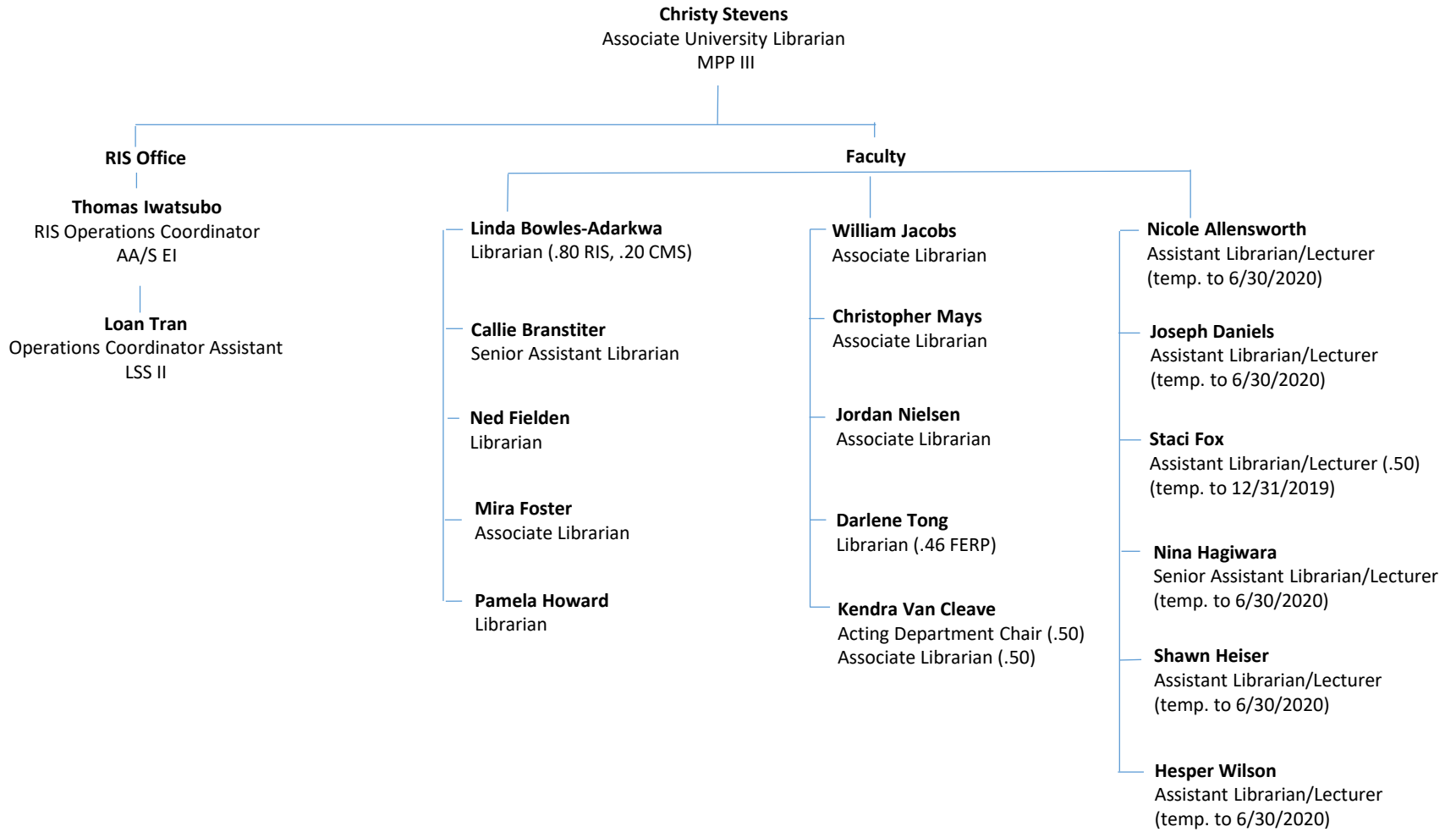
Georgianna Wong
Business Officer
AA/S EII

Maria Shiela Gaurano
Administrative Assistant
AA/S

J. Paul Leonard Library
ORGANIZATION CHART
COLLECTION MANAGEMENT SERVICES (CMS)

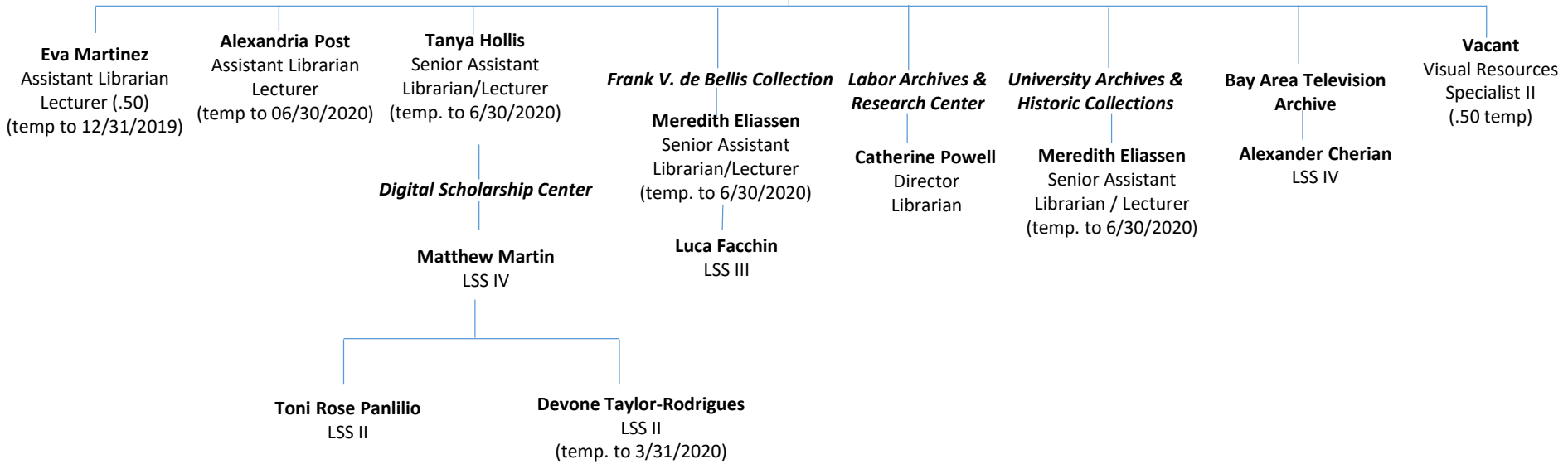


J. Paul Leonard Library
ORGANIZATION CHART
 RESEARCH AND INSTRUCTIONAL SERVICES (RIS)

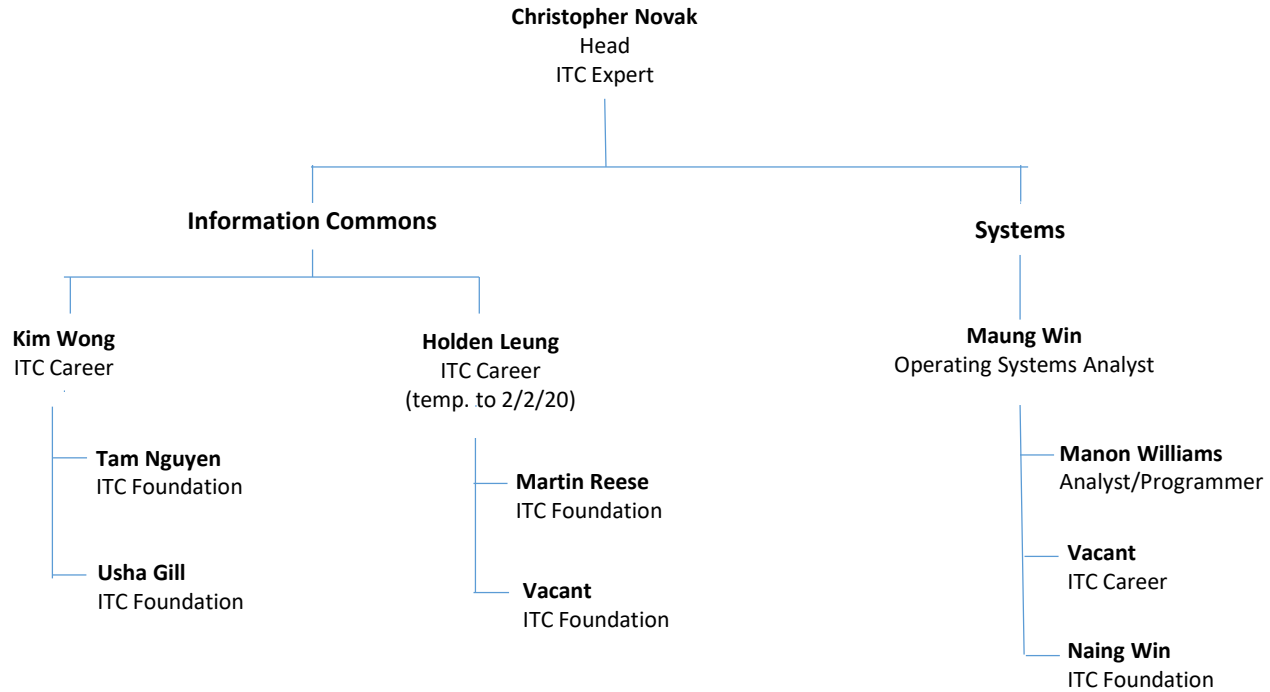


J. Paul Leonard Library
ORGANIZATION CHART
SPECIAL COLLECTIONS

Christy Stevens
Associate University Librarian



J. Paul Leonard Library
ORGANIZATION CHART
INFORMATION TECHNOLOGY



J. Paul Leonard Library
ORGANIZATION CHART
Access Services

Christy Stevens
Associate University Librarian

Aleta Asbury
Head
AA/S EII
Position #3221/Job Code 1038

