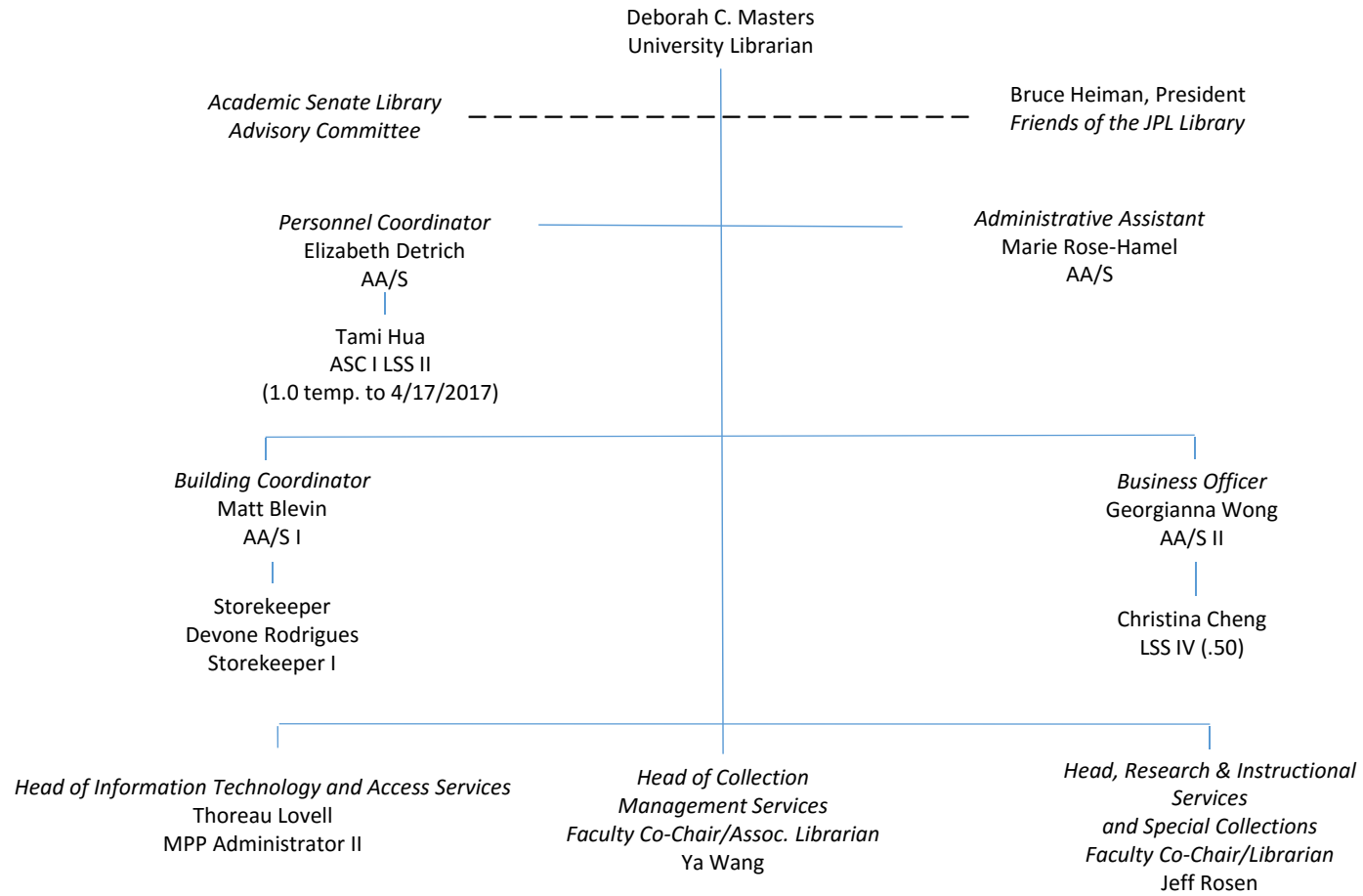
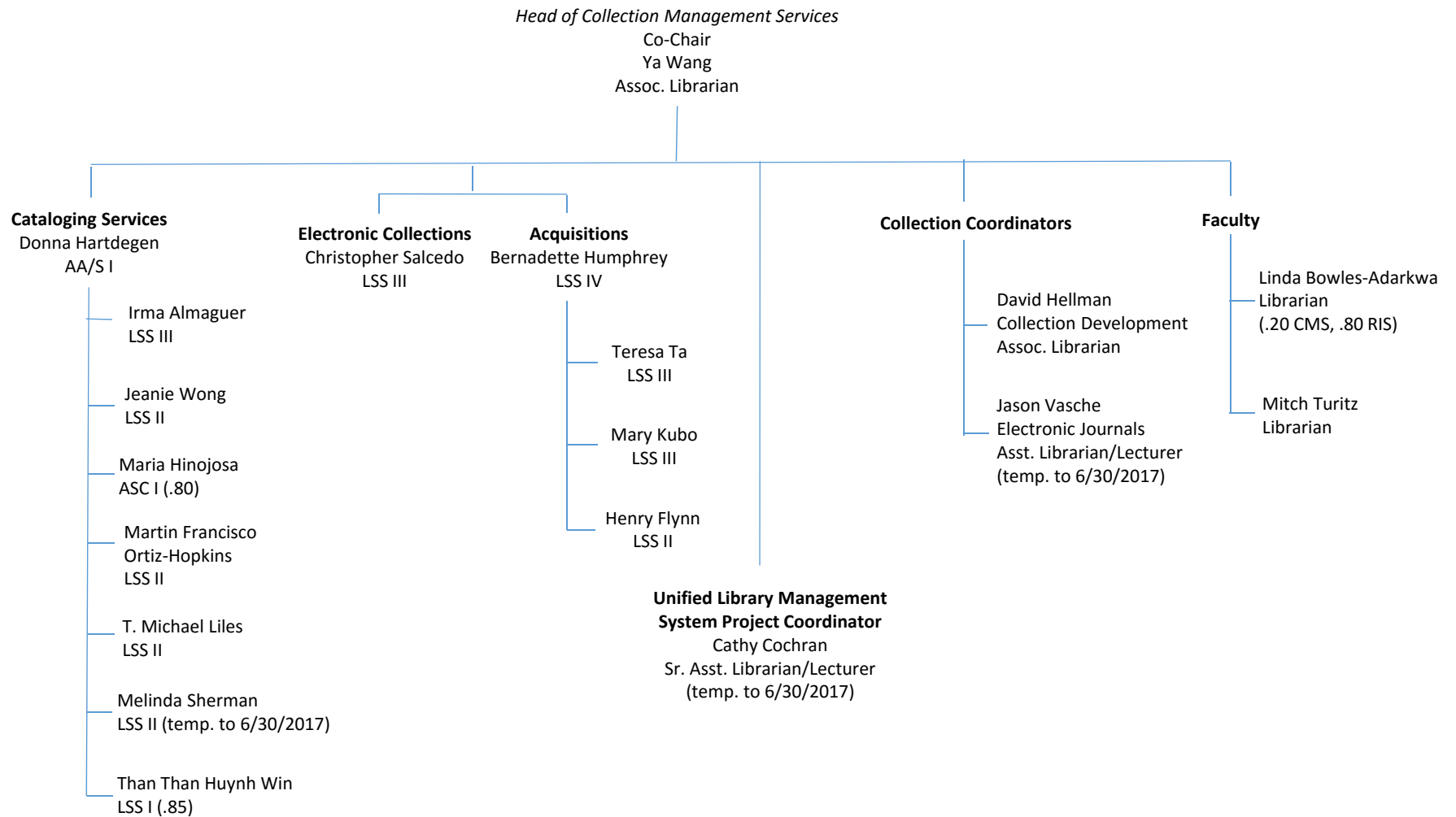


J. Paul Leonard Library ORGANIZATION CHART



Updated 1/25/2017

J. Paul Leonard Library
ORGANIZATION CHART



Updated 1/25/2017

J. Paul Leonard Library **ORGANIZATION CHART**

Head, Research & Instructional Services and Special Collections

Faculty Co-Chair
Jeff Rosen
Librarian

RIS Office
RIS Operations Cord.
Thom Iwatsubo
AA/S I
Loan Tran
LSS II

Faculty

Linda Bowles-Adarkwa
Librarian
(.80 RIS, .20 CMS)

Gina Castro
Sr. Asst. Librarian
(.46 FERP)

Ned Fielden
Librarian

Mira Foster
Assoc. Librarian

Caroline Harnly
Librarian (.50 FERP)
(1/19/17 – 5/17/17)

Pam Howard
Assoc. Librarian

Chris Mays
Assoc. Librarian

Athena Nazario
Sr. Asst. Librarian

Darlene Tong
Librarian
(.46 FERP)

Kendra Van Cleave
Assoc. Librarian

Nina Hagiwara
Sr. Asst. Librarian/Lecturer
(temp. to 6/30/2017)

Hesper Wilson
Asst. Librarian/Lecturer
(temp. to 6/30/2017)

Nicole Allensworth
Asst. Librarian/Lecturer
(temp. to 6/30/2017)

Joseph Daniels
Asst. Librarian/Lecturer
(temp. to 6/30/2017)

Shawn Heiser
Asst. Librarian/Lecturer
(temp. to 6/30/2017)

Coordinators:

Library Education: Kenda Van Cleave

Help Desk: Thomas Iwatsubo

Research Assistance: Hesper Wilson with Athena Nazario

Electronic Reference: Pam Howard with Chris Mays

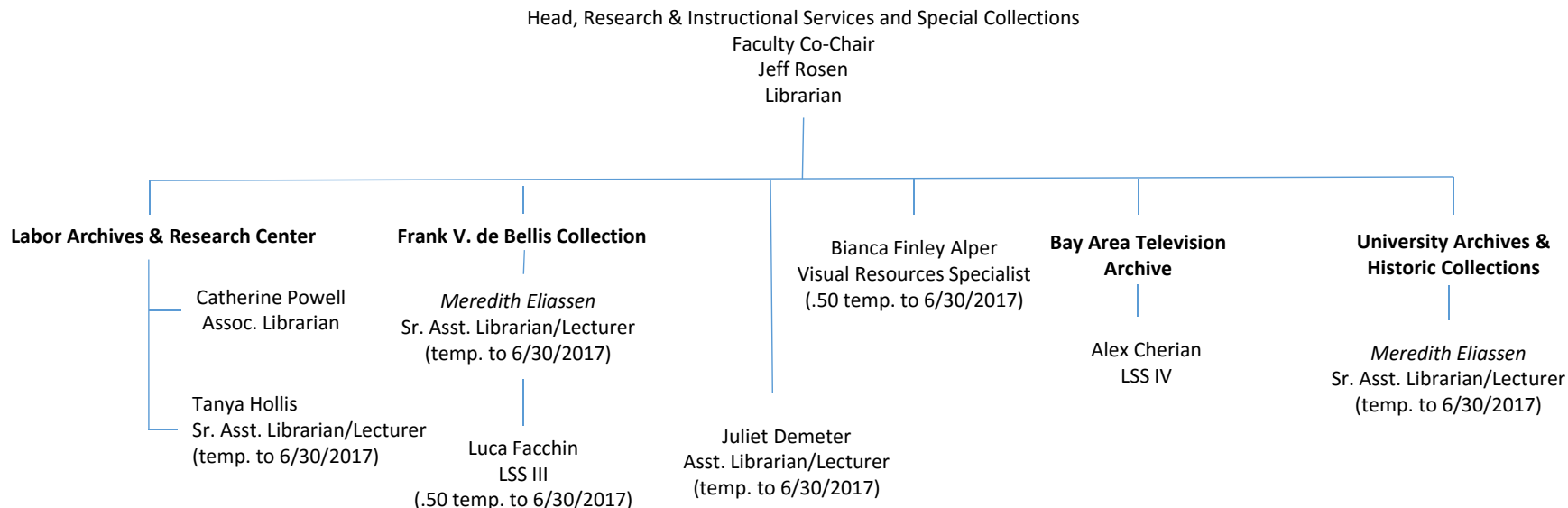
Orientations: Ned Fielden

Government Publications Depository Librarian: Nina

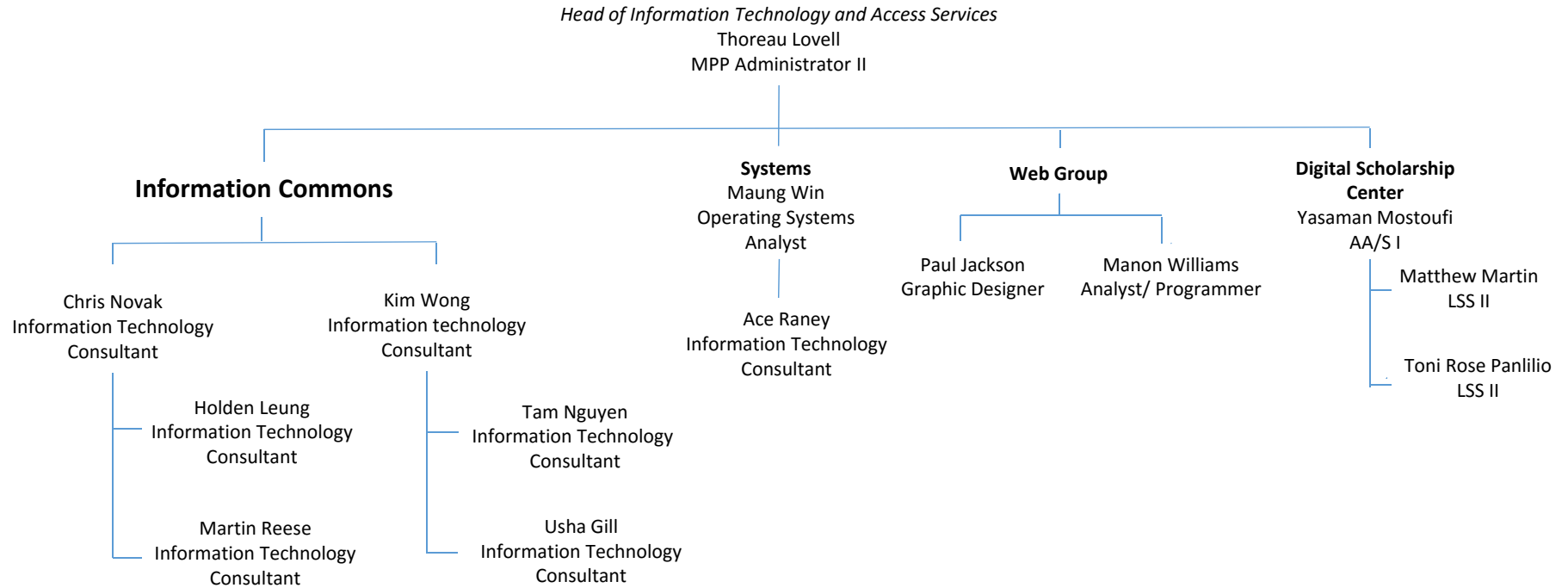
Hagiwara

Social Media: Athena Nazario

J. Paul Leonard Library
ORGANIZATION CHART



J. Paul Leonard Library
ORGANIZATION CHART



J. Paul Leonard Library
ORGANIZATION CHART

